



# LOW CARBON REAL ESTATE CONSULTING

## URBAN PLANNING



### YOUR CHALLENGES

- Create an attractive urban environment for inhabitants and investors
- Choose and deploy profitable low-carbon energy systems, energy-efficient housing and smart grids with decentralised renewables
- Optimise investments for the sustainable goals for your portfolio
- Have a clear vision of the best energy masterplan in the long-term for your project
- Find funds to finance your project

EDF has in-depth expertise in the low carbon energy sector coupled with a long-term commitment to fostering technical, social and business innovation.

With its subsidiary Urbanomy, EDF has established an international net zero carbon consultancy to offer an integrated approach for real estate projects and portfolios.

EDF supports private and public actors in the upstream/planning phase of their property projects or portfolio strategies, to help them reach their carbon neutrality goals and improve the quality of life. We can provide strategic consultancy, techno-economic studies and visualisation.

### OUR OFFER



#### Climate change as the major challenge for real estate

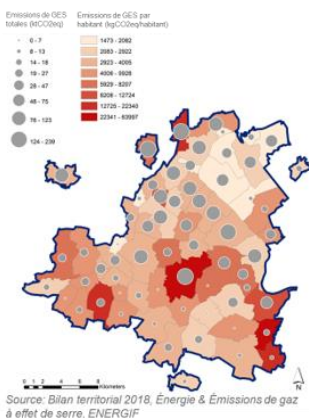
Urbanomy is the low carbon real estate consultancy that helps you in co-creating a complete model of your project, building technical and economic scenarios to facilitate decision-making and reach your objectives.

We can also provide visualisation for scenario modelling of all energy variables, including performance, consumption trends, the potential for renewables, photovoltaic and geothermal energy, or the installation of electrical vehicle infrastructure or hydrogen refueling station.

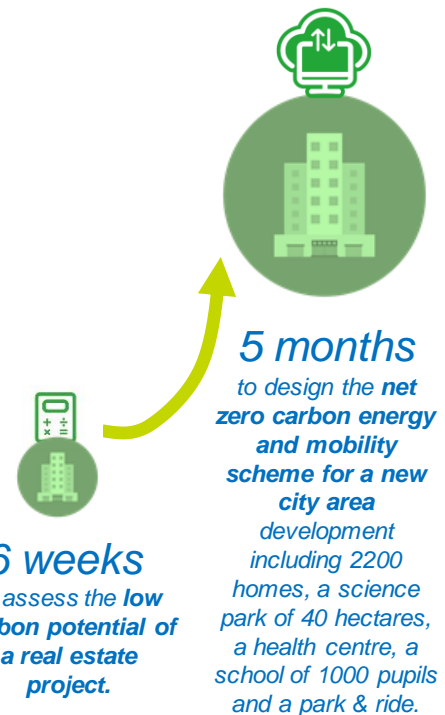
#### Any scale, use, new development or retrofit: we adapt the answer

We advise our customers on different types of projects (urban new or re-development, regeneration, retrofit, portfolio management), any scale of project (block, district or city/region) and for various uses (residential, commercial or mixed-use).

Example: conduct a diagnosis of the territory to assess the route to net zero

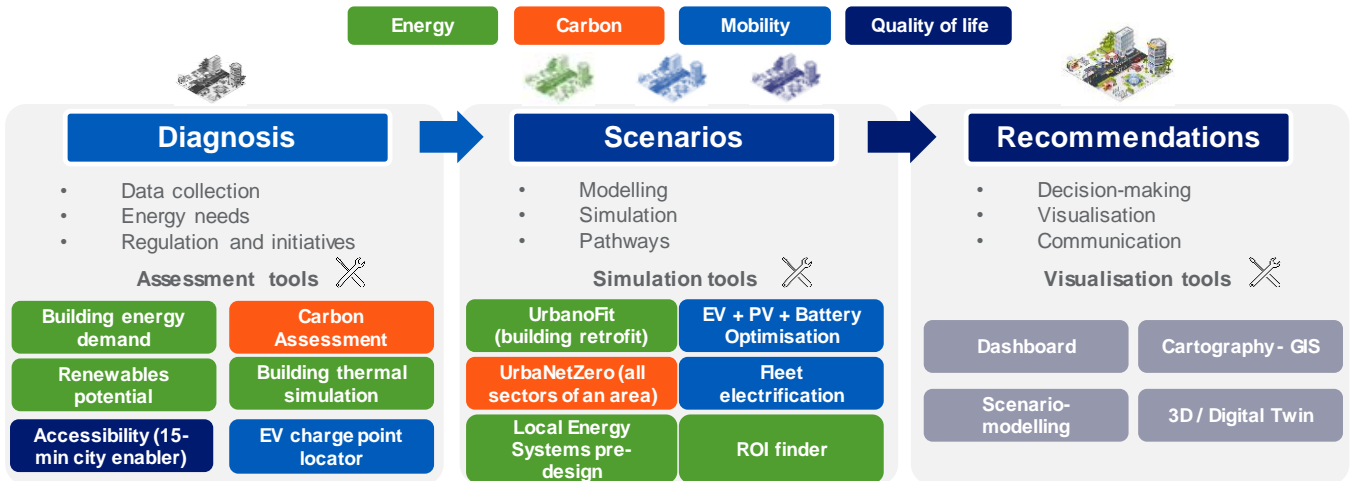


IRVE ouverts au public sur le périmètre du SMOYS (2021)



## THE METHODOLOGY

Systemic and iterative, to ensure your vision is fully integrated into your planning.



Our engineering and consultancy expertise is completed by using in-house models and tools, developed from EDF operational knowledge.

### The added value

Urbanomy offers an integrated vision with interconnected expertise: energy efficiency, energy systems, mobility, quality of life, community and the environment.

The study includes the analysis of economical impact, investment, operation and maintenance costs, financial viability, the impact on the local grid, as well as the economic balance sheet of energy infrastructures.

With Urbanomy, the investments and operational costs are optimised from the start of the urban planning to the urban development of retrofit, restraining the carbon foot print.

### An innovative method

A unique approach, coupling:

- Expertise in low carbon energy solutions

- Study combining energy, mobility, carbon and quality of life
- Visualisation tools to enhance stakeholder engagements and ease decision making

### Fast track results

In addition to our smart integrated planning consultancy, we provide fast track results on specific needs for your projects:

- Solar-potential maximiser: define the global potential of your assets for PV production, identify optimisation levers based on the initial plan (greenfield) or existing area
- E-mobility charge point locator: define the best locations for charging points and simulate innovative scenarios to develop e-mobility
- 15-minute city enabler: illustrate a walking/cycling/driving/public transport 15-minute radius to explore and improve the accessibility for citizens

### Our strengths:

**+50 scenarios, 40**

**KPIs: energy, economic, environmental and financial**

**6 fields of expertise: carbon, energy, mobility, quality of life, environment, community**

### They trusted us:

**Oxfordshire County Council, Caisse des Dépôts, SMOYS, the cities of Lyon, Berlin, Singapore...**

### Use case Salt Cross Garden Village: integrated energy and mobility concept to reach net zero carbon



**Objective:** develop a new district, without increasing current carbon emissions.

**Project:** define the best energy and mobility scheme to reach net zero carbon. To support the business model, V2G and potential revenues through grid services have been assessed.

**Results:** convert ideas to operational-ready recommendations, define potential routes that reach the targets and ensure feasibility, viability and ultimate benefits for the local community.

N'imprimez ce message que si vous en avez l'utilité.

EDF SA  
22-30, avenue de Wagram  
75382 Paris cedex 08  
Capital de 1 549 961 789,50 euros  
552 081 317 R.C.S. Paris

International Division  
Europe Business Solutions  
Tour PB6 - Paris La Défense  
92800 Puteaux

Directeur de la publication : Daniel DUPOUY  
Directeur de la rédaction : Lucie RATY  
Rédacteur en chef : Patricia VAZQUEZ  
Conception graphique : EDF SA  
Comité de rédaction : DI - DEBS, Urbanomy, DSM

**Pour plus de renseignements :**  
Direction Internationale, Direction Europe Business Solutions

**Patricia VAZQUEZ**  
patricia.vazquez@edf.fr